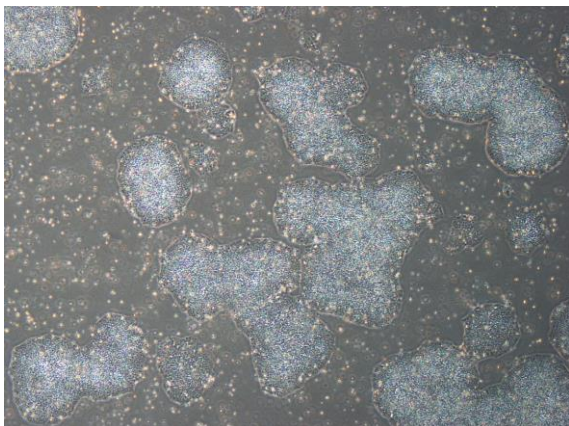
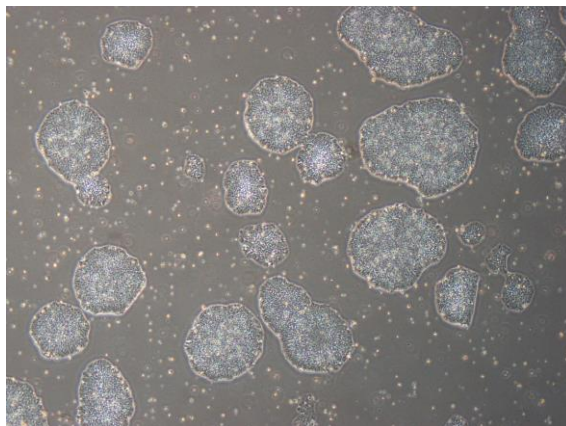


【 CiRA-j-1591 】 Morphology of iPSC colonies

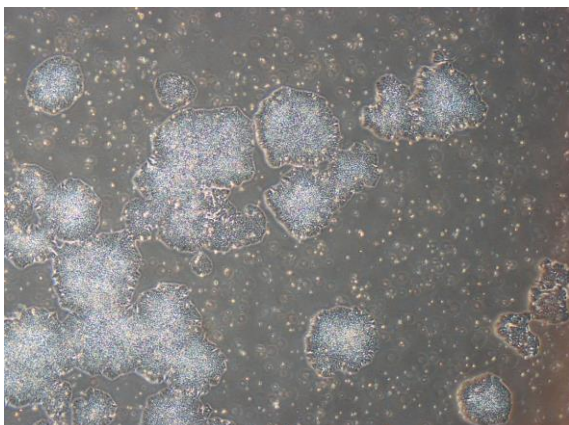
CiRA-j-1591-A: passage-3



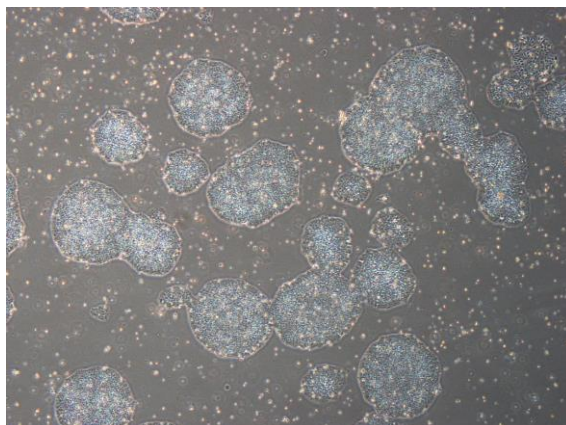
CiRA-j-1591-B: passage-3



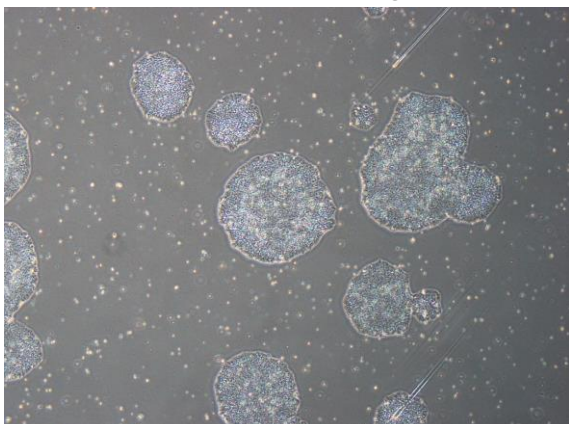
CiRA-j-1591-C: passage-3



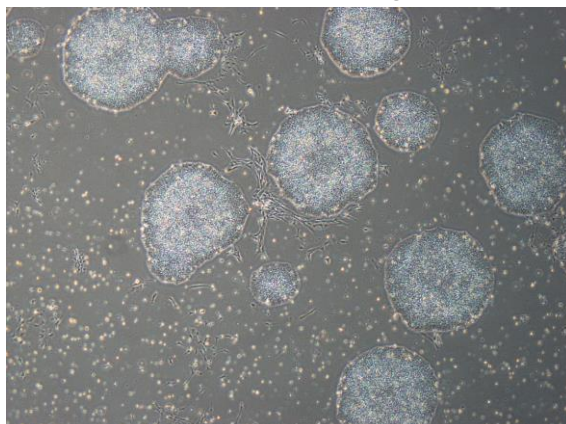
CiRA-j-1591-D: passage-3



CiRA-j-1591-E: passage-3



CiRA-j-1591-F: passage-3



(All images were captured at 4x magnification)